

Incorporating

HIRE ACCESS
SERVICES

1 October 2009

The Manager
Company Announcements
Australian Securities Exchange Ltd
Level 5, 20 Bridge Street
Sydney NSW 2000

Dear Sir,

Broker Presentation

Please find attached a presentation to be made to brokers today, by the Group Managing Director of IFS Construction Services Limited, Mr. John Yeudall.

Yours sincerely,

A handwritten signature in black ink, appearing to read 'Stuart Usher'.

Stuart Usher
Company Secretary



INTERNATIONAL
FORMWORK &
SCAFFOLDING LTD

IFS CONSTRUCTION SERVICES LTD

Broker Presentation

October 2009



"Bringing Experience, Quality and Innovation to the Construction Services Industry"





INTERNATIONAL
FORMWORK &
SCAFFOLDING LTD

IFS Success Formula

Successful and highly experienced management

+

Geographic spread

+

Strong strategic partners

+

Complementary business streams (formwork / scaffolding / design)

= Business Success

"Bringing Experience, Quality and Innovation to the Construction Services Industry"





INTERNATIONAL
FORMWORK &
SCAFFOLDING LTD

KEY POINTS

- Listed on ASX June 2009
- Scaffolding & Formwork operations in WA, Sydney, Asia and Middle East
- Relationship with MMS(Asia)
- Sustainable annual double digit revenue growth
- Margins will expand
- 2010 EBITDA targets by end of October
- Low debt

"Bringing Experience, Quality and Innovation to the Construction Services Industry"





GROWTH OPPORTUNITIES

- The next wave of resource, industrial and infrastructure development
- Asia & Middle East
 - Increased market share
 - New markets
- Scaffolding distribution in Middle East (TMS)
- Profit Leverage





INTERNATIONAL
FORMWORK &
SCAFFOLDING LTD

CORPORATE PROFILE

ASX Code	IFS
Current Price	\$0.086
52 week range	\$0.003- \$0.14
Market Capitalisation	\$13.9 million
Shares on Issue	161.8 million
Quoted Options	97.0 million
Unquoted Options	16.2 million

"Bringing Experience, Quality and Innovation to the Construction Services Industry"





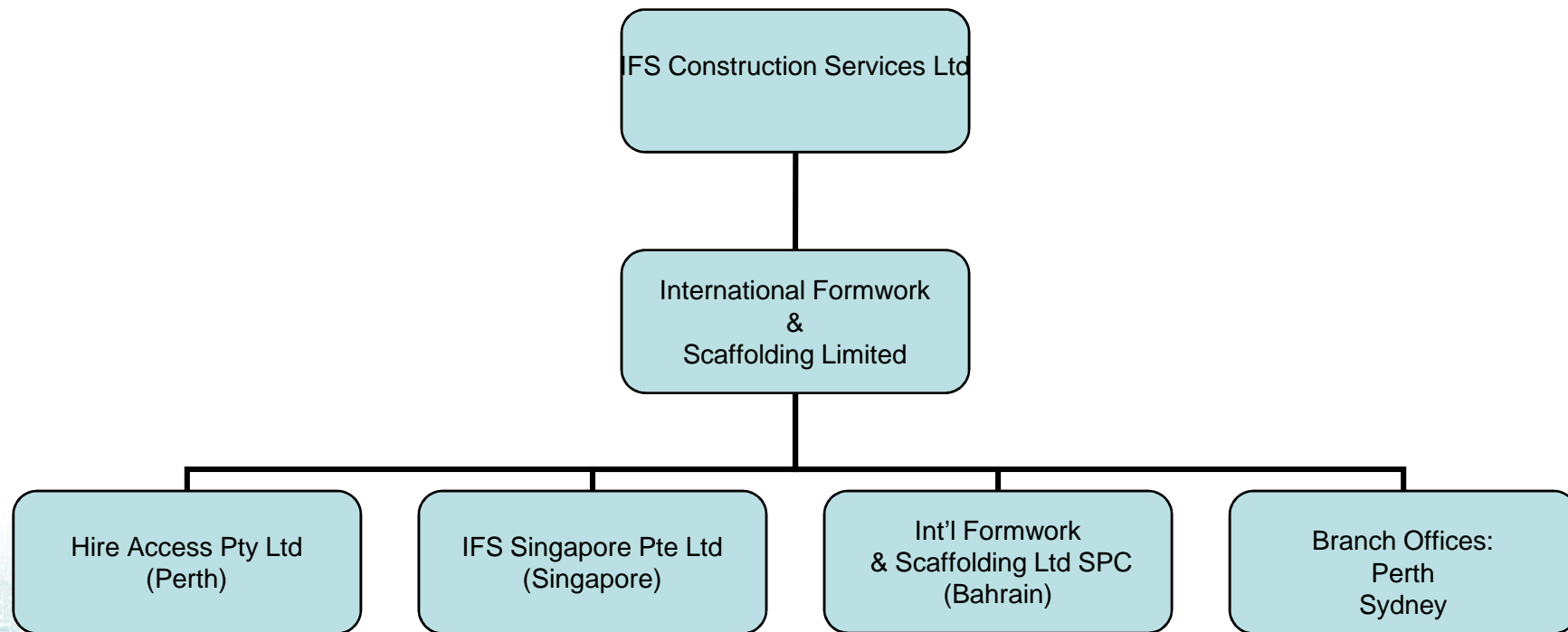
FINANCIAL SUMMARY

\$'mill	Interim 2009	Full Year 2009 (E)
Revenue	11.5	22.0
Normalised EBITDA	2.5	3.2
Reported EBITDA	1.8	2.5





CORPORATE STRUCTURE





INTERNATIONAL
FORMWORK &
SCAFFOLDING LTD

NEXT WAVE OF DEVELOPMENT

- Western Australia
 - Gorgon
 - Pluto
 - Oakajee
 - Others
- Asia / Middle East
 - LNG/Oil: Singapore, Indonesia, Qatar
 - Roads, Highways, Bridges, Rail: Singapore, Bahrain, elsewhere



"Bringing Experience, Quality and Innovation to the Construction Services Industry"





INTERNATIONAL
FORMWORK &
SCAFFOLDING LTD

MAJOR PROJECTS

- DBS Bank Building, Changi
- Wee Hur Construction – Grange Road, Singapore - 40 Storey Condominium
- Sentosa Island Resort, Singapore
- Cement Silo, Kwinana
- Perth Arena
- Chatswood Civic Centre (Sydney)
- Dolphin Keys Moorings, Mandurah

"Bringing Experience, Quality and Innovation to the Construction Services Industry"





COMEPETITIVE ADVANTAGES

- Geographic diversity
- Design and engineering capabilities
- Safety standards
- Pre-qualification with international groups such as Leighton and Bovis Lend Lease
- Long Life, low maintenance galvanised steel components
- “SuperProp”
- Priority access to MSS (Asia) manufacturing capability





Industry Economics

- Capital intensive in start up and growth phases.
- Growth is limited by capital availability.
- High utilisation rates are key to driving satisfactory returns on capital employed.
- Require a mix of equipment sales and rental to balance capital / profit.
- Extraordinary long life equipment
- EBITDA margins in the order of +30% are achievable.





INTERNATIONAL
FORMWORK &
SCAFFOLDING LTD

MODERATE COMPETITION

- Few large scale competitors
 - Cape,
 - GCS
 - Boral
 - RMD
 - Harsco SGB



"Bringing Experience, Quality and Innovation to the Construction Services Industry"





INTERNATIONAL
FORMWORK &
SCAFFOLDING LTD

DIRECTORS

- Bill Ryan, Chairman
- John Yeudall, Group Managing Director
- Doug Weir, Executive Director
- Billy Ong, Non Executive Director
- Ian Spence, Non Executive Director



"Bringing Experience, Quality and Innovation to the Construction Services Industry"

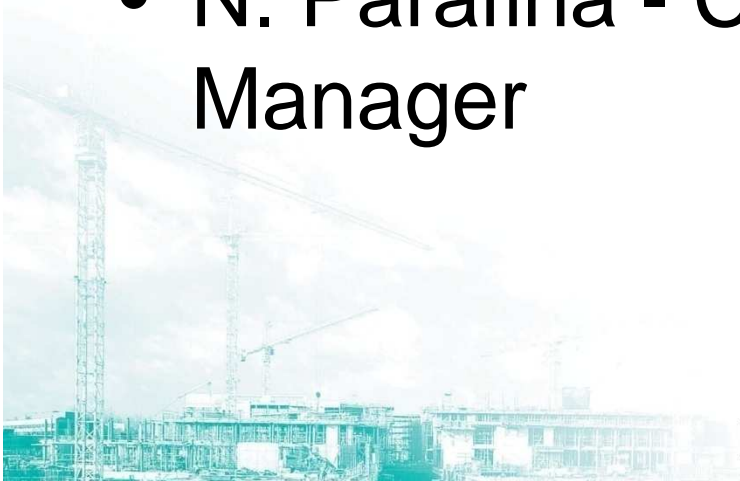




INTERNATIONAL
FORMWORK &
SCAFFOLDING LTD

SENIOR MANAGEMENT

- Scott Williams, Hire Access
- Stuart Usher, CFO and Company Secretary
- C. Tan - Country Manager, Singapore
- N. Parafina - Chief Design & Engineering Manager



"Bringing Experience, Quality and Innovation to the Construction Services Industry"





What is Formwork?

- Formwork comprises the temporary structure used to hold concrete to form vertical walls / columns and horizontal floors / slabs. Design of formwork products is becoming more demanding as architectural advances change building design and aesthetics.
- With Safety concerns now firmly entrenched in the construction industry, companies that can combine formwork and scaffolding services with the highest levels of safety are in high demand.
- Technical design and engineering are driving the industry forward.

